

# IRENE'S WOODS PRESERVE

## NAROMI LAND TRUST

**NOTE: TOWNER HILL PARKING AREA AND TRAILS ARE PROPOSED ONLY. SCHEDULED FOR COMPLETION FALL 2009.**

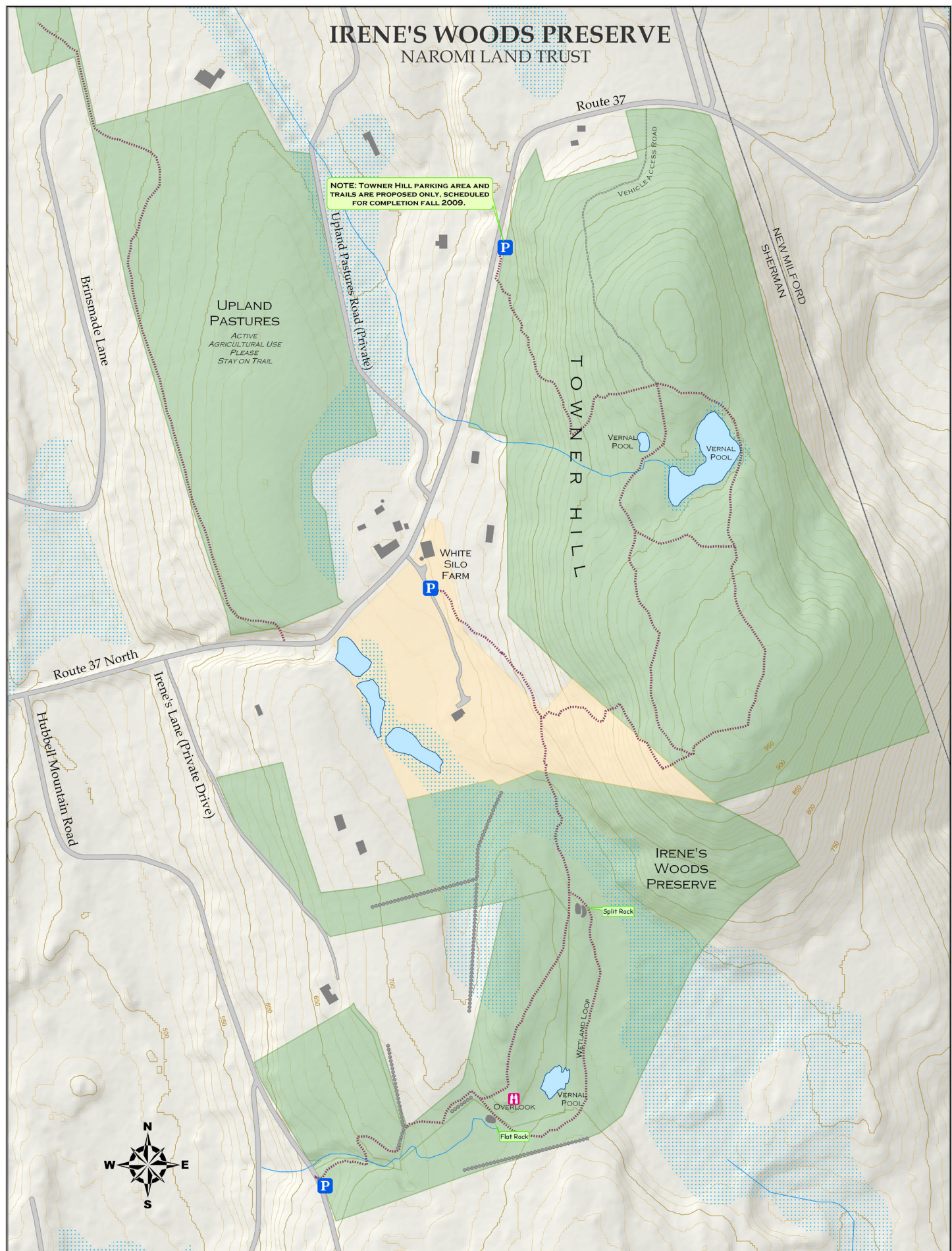
### UPLAND PASTURES

ACTIVE AGRICULTURAL USE  
PLEASE STAY ON TRAIL

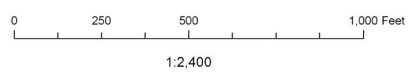
WHITE SILO FARM

TOWNER HILL

IRENE'S WOODS PRESERVE



- |  |                  |  |                              |
|--|------------------|--|------------------------------|
|  | Trail            |  | Naromi Land Trust Properties |
|  | Stone Walls      |  | White Silo Farm              |
|  | 50 Foot Contours |  | Wetlands                     |
|  | 10 Foot Contours |  | Buildings                    |
|  |                  |  | Roads                        |
|  |                  |  | Pond                         |



**Trail Description:**  
Varied woodland trail through moderate terrain. Highlights include vernal pool, rock outcrops, and small scenic overlook.

**Trail Length:**

- 1300 Feet (0.25 miles) to Flat Rock & Overlook
- 2200 Feet (0.40 miles) to Split Rock
- 4100 Feet (0.78 miles) to Route 37

**Naromi Land Trust**  
PO Box 265, Sherman, CT 06784

This map does not represent an accurate survey. It is intended for planning purposes only. October 23, 2007

**Preserve Policies**

- Preserve Open Sunrise to Sunset
- No Motorized Vehicles
- No Overnight Parking
- No Hunting
- No Camping
- Please Keep Dogs on a Leash
- Please Respect Private Property
- Please Stay on Trails

Contact for more information or to report a problem:  
(860) 354-0260  
Info@naromi.org  
www.naromi.org